

Terrains in Transition

Featuring Artists

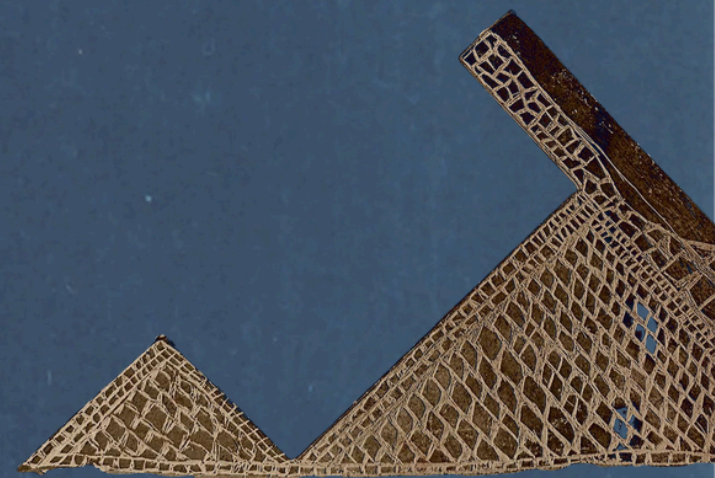
Pooja Shinde | Prachi Mayekar

Curated By

Nachiket Prakash

Exhibit on View till 12th July 2025

Kamalnayan Bajaj Art Gallery



Terrains in Transition

The exhibition presents the artworks of artists Prachi Mayekar and Pooja Shinde whose practices, as formally different as they are, meet at the intersections of place, impermanence, and the traces of change—both internal and external. Presenting themselves under the rubric of "Terrains in Transition," the exhibition explores the fluid interactions between objects, environments, and memory.

Terrains in Transition navigates physical and affective landscapes constantly in motion—built, worn away, lived, and remembered. Throughout the exhibition, terrain is a place where function and feeling converge, where areas change under the force of time, usage, and imperceptible drift. The works consider how shapes—whether built, domestic, or symbolic—evolve in significance and substance over time. Staged assemblages composed of mundane packaging, domestic detritus, and manufactured objects resonate with the developments of the city and standardization, and call attention to how we remake our worlds to reflect regimes of control, containment, or comfort. Fragile etchings of weathered facades and neglected corners provide a counterpoint—subtle observations of time's inscriptions, asking viewers to attend to the poetic details that are lost in the rush of everyday life.

Collectively, these texts invite us to consider how we negotiate and change space—not only physically, but also emotionally and culturally. Ground here is not fixed earth but an inscribed history of presence, memory, and change. Every surface, every structure, every object becomes an actor in a larger story—a one influenced by impermanence, accommodation, and the invisible rites of everyday life.

"Terrains in Transition" is not a resolution but an offer of residence: within the passing, within the bypassed, within the banal made uncommon—between control and breakdown, between here and there.





Nachiket Prakash

Nachiket Prakash is an artist, curator, and art educator based in Pune. A graduate in Drawing and Painting from College of Fine Arts (2013), his practice spans installation art, curatorial projects, and arts education. Nachiket has been actively involved in shaping contemporary art discourse in Pune through exhibitions, workshops, and collaborative initiatives.

In 2017, he served as co-curator and coordinator for the Pune Biennale Foundation and later curated Prakalp Pune at TIFA Working Studios in 2019. He is an alumnus of the ArtThink South Asia (ATSA) Arts Management Fellowship, Pune chapter, and has led programming as both curator and art manager at Zaga Studio from 2017 to 2019.

Committed to fostering critical engagement with the arts, Nachiket regularly curates workshops, art camps, and mentorship programs for emerging artists. He currently teaches as visiting faculty at FLAME University and MIT School of Fine Arts, Pune.





Pooja Shinde

Pooja shinde is a Mumbai based Printmaker and Visual Artist whose practice centers around etching as a medium to explore the layered narratives of urban architecture. Drawing from the philosophy of wabi Sabi, her work embraces transience, decay and the quite beauty of imperfection.

Pooja holds a BFA in painting (2016) and an MFA in Printmaking (2018) from Sir J.J. School of Art, Mumbai. She is a recipient of several awards and scholarships, including the Young Artist Scholarship in Visual Arts from the Ministry of Culture, India. She currently lives and practices in Mumbai.



Aged Arch (2025)
Etching on paper 1/4
8 x 11.5 in



Aged Arch 1 (2025)
Etching on paper 1/4
8 x 11.5 in



Hath Gadi (2025)
Etching on paper 1/4
8 x 11.5 in



Aged Arch 1 (2025)
Etching on paper 1/4
8 x 11.5 in



Pace (2025)
Etching on paper 1/4
8 x 11.5 in



Line (2025)
Etching on paper 1/4
8 x 11.5 in



Early Bright (2025)
Etching on paper 1/4
8 x 11.5 in



Touch (2025)
Etching on paper 1/4
8 x 11.5 in



Rusted Patterns (2025)

Etching on paper 1/4

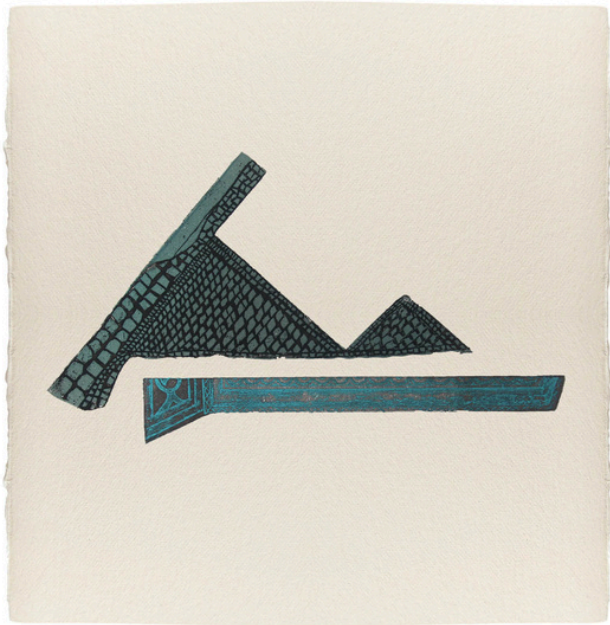
8 x 11.5 in



Top of the roof 1 (2025)

Etching on paper 1/4

8 x 11.5 in



Static Transit (2025)
Etching on paper 1/4
8 x 11.5 in



Watcher at the window (2025)
Etching on paper 1/4
8 x 11.5 in



White Wall (2025)
Etching on paper 1/4
8 x 11.5 in



Top of the Roof (2025)
Etching on paper 1/4
8 x 11.5 in



Collage 1 (2025)
Etching on paper 1/4
12 x 18 in



Collage 2 (2025)
Etching on paper 1/4
12 x 18 in



Collage 3 (2025)

Etching on paper 1/4

12 x 18 in



Prachi Mayekar

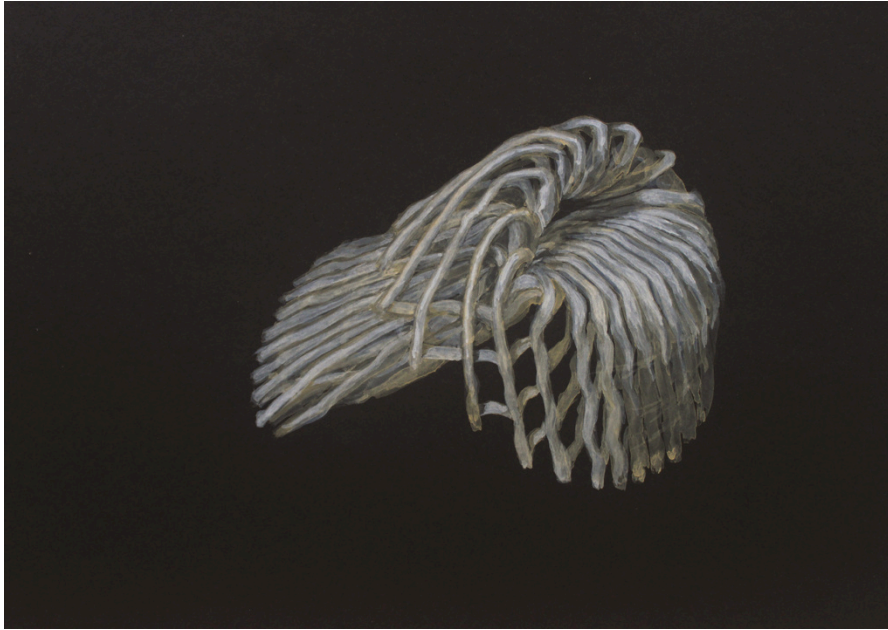
Prachi Prafulla Mayekar (b. 1997) is a visual-art practitioner based in Thane, Maharashtra. She completed her BFA in Interior Decoration from Sir J. J. School of Art, Mumbai (2019) and Diploma in Indian Aesthetics from University of Mumbai (2022). Prachi has received 'Kalanand Art Grant' by PDAF (2023) and has participated in various group shows including 'Abir First Take', Hutheesing Visual Art Centre, CEPT, Ahmedabad (2024); 63rd Maharashtra State Art Exhibition, Jehangir Art Gallery, Mumbai (2024) and 'RAAG', Initiated by Dot Line Space Art Foundation, Nine Fish Art Gallery, Mumbai (2023), among others.



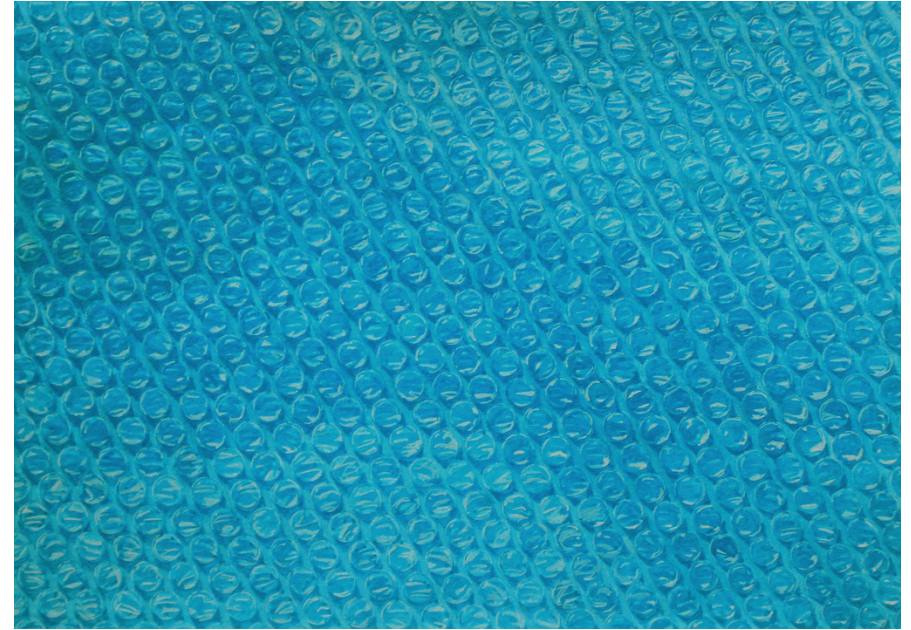
Colony 1 (2024)
Gouache on Paper
8 x 11.5 in



Cavern (2024)
Gouache on Paper
8 x 11.5 in



Out-fit (2025)
Gouache on Paper
8 x 11.5 in



Pool (2025)
Gouache on Paper
8 x 11.5 in



Ship (2025)

Gouache on Paper

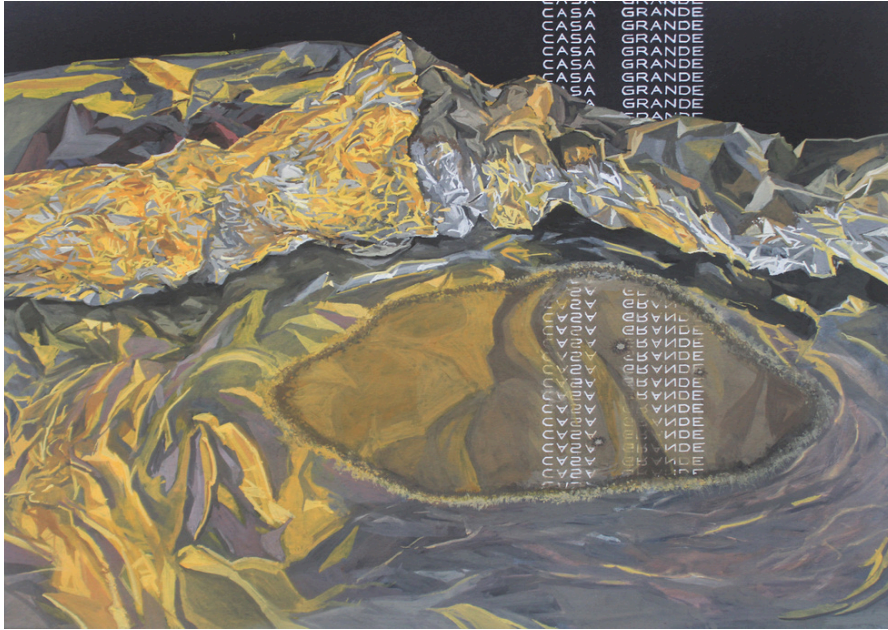
11.5 x 8 in



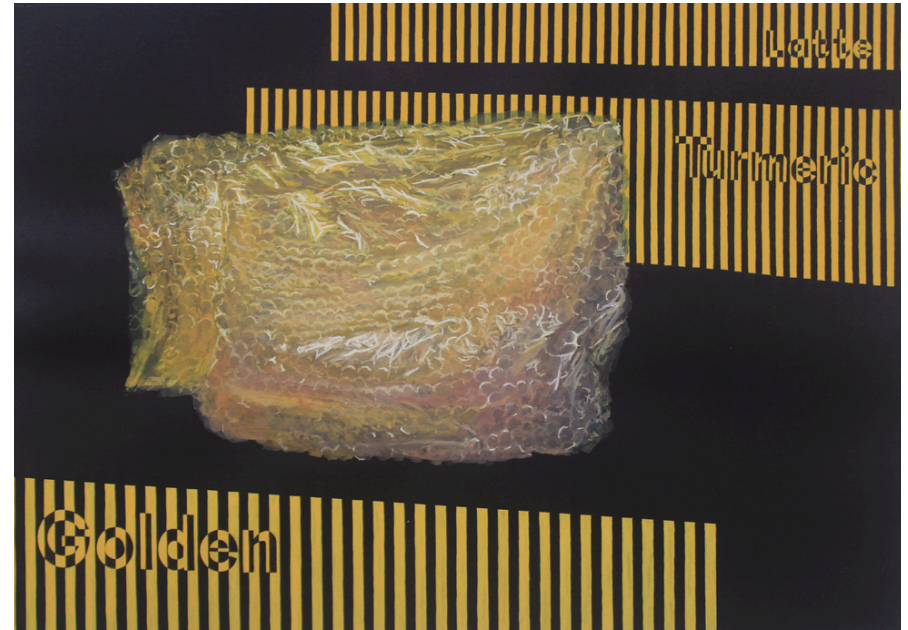
Colony 2 (2024)

Gouache on Paper

11.5 x 16.5 in



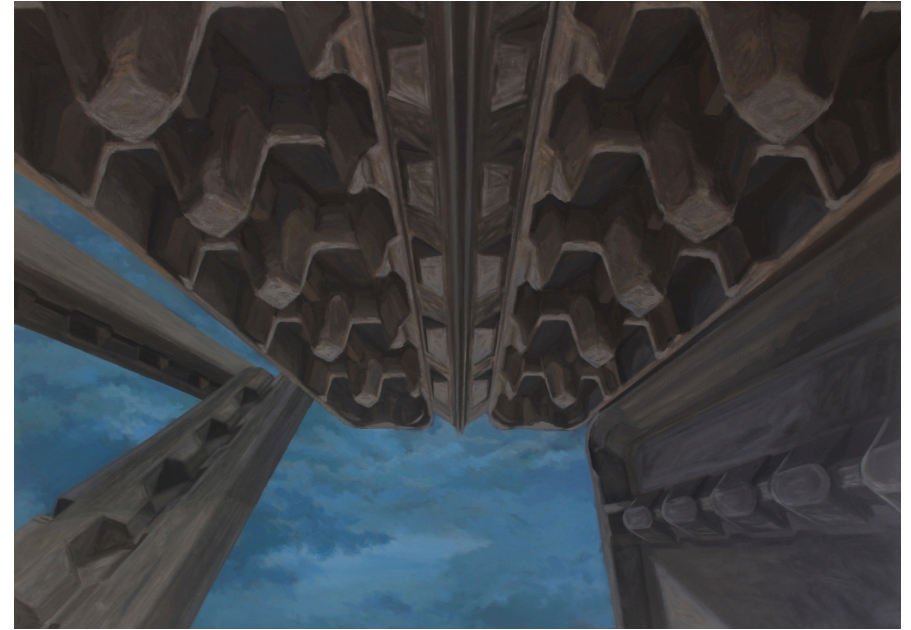
Civilization 1 (2024)
Gouache on Paper
11.5 x 16.5 in



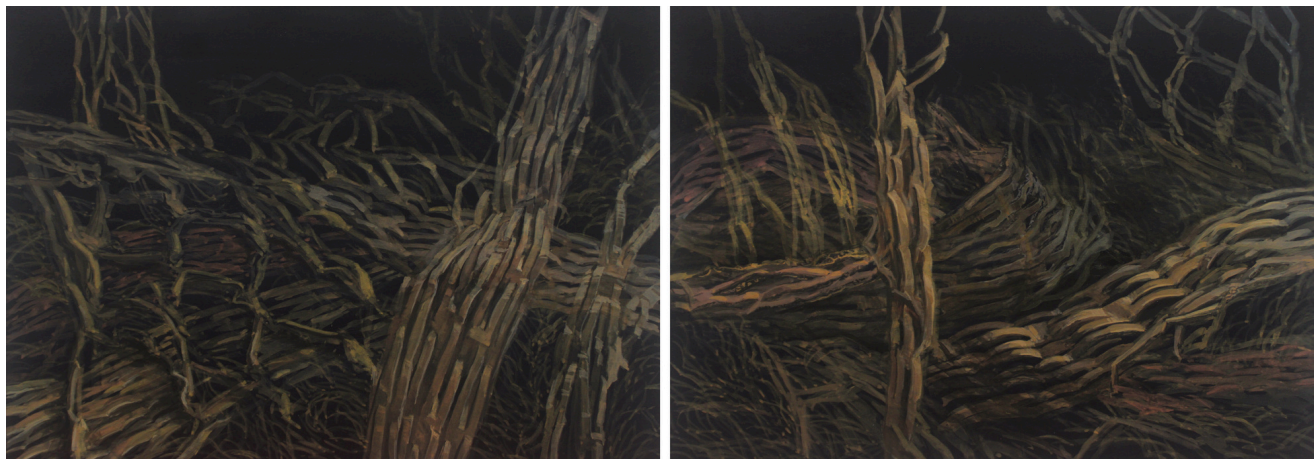
Civilization 2 (2024)
Gouache on Paper
11.5 x 16.5 in



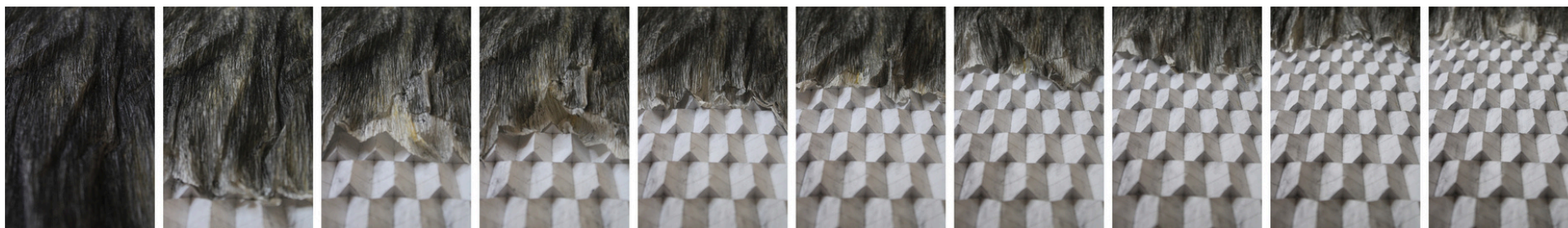
Colony 3 (2024)
Gouache on Paper
19.5 x 27.5in



Colony 4 (2025)
Mix Media on Canvas
36 x 48 in



Forest (2025)
Gouache on Paper
Diptych
11.5 x 33 in



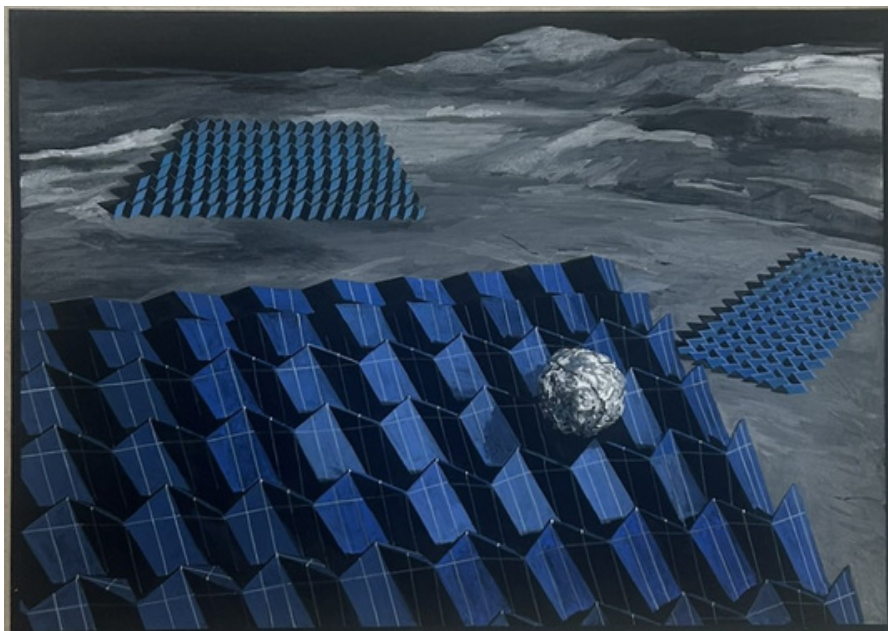
Altered Landscape 1 (2025)

Digital print on Paper

1/3 Editions

10 x 75 in





Civilisation 3 (2024)

Gouache on Paper

11.5 x 16.5 in